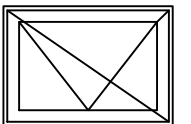


Window type

Finish
Aluminium Frames:-
PPC RAL 7048 30% Gloss (+/- 5%).
Timber - RAL 9010 White. Internal
Aluminium To Futura+ Sashes: RAL
9010 White.

Ironmongery:
Matt Chrome Locking Handles and
Lockable Restrictors To All Outward
Opening Sashes. Locking Hoppe
Handles To Tilt & Turn Sashes.



Note
Arrow points to handle
and diagonal slash shows
frame size

REV	DESCRIPTION	DATE

Architect

Main Contractor

Project

Title
FRAME IC DOOR

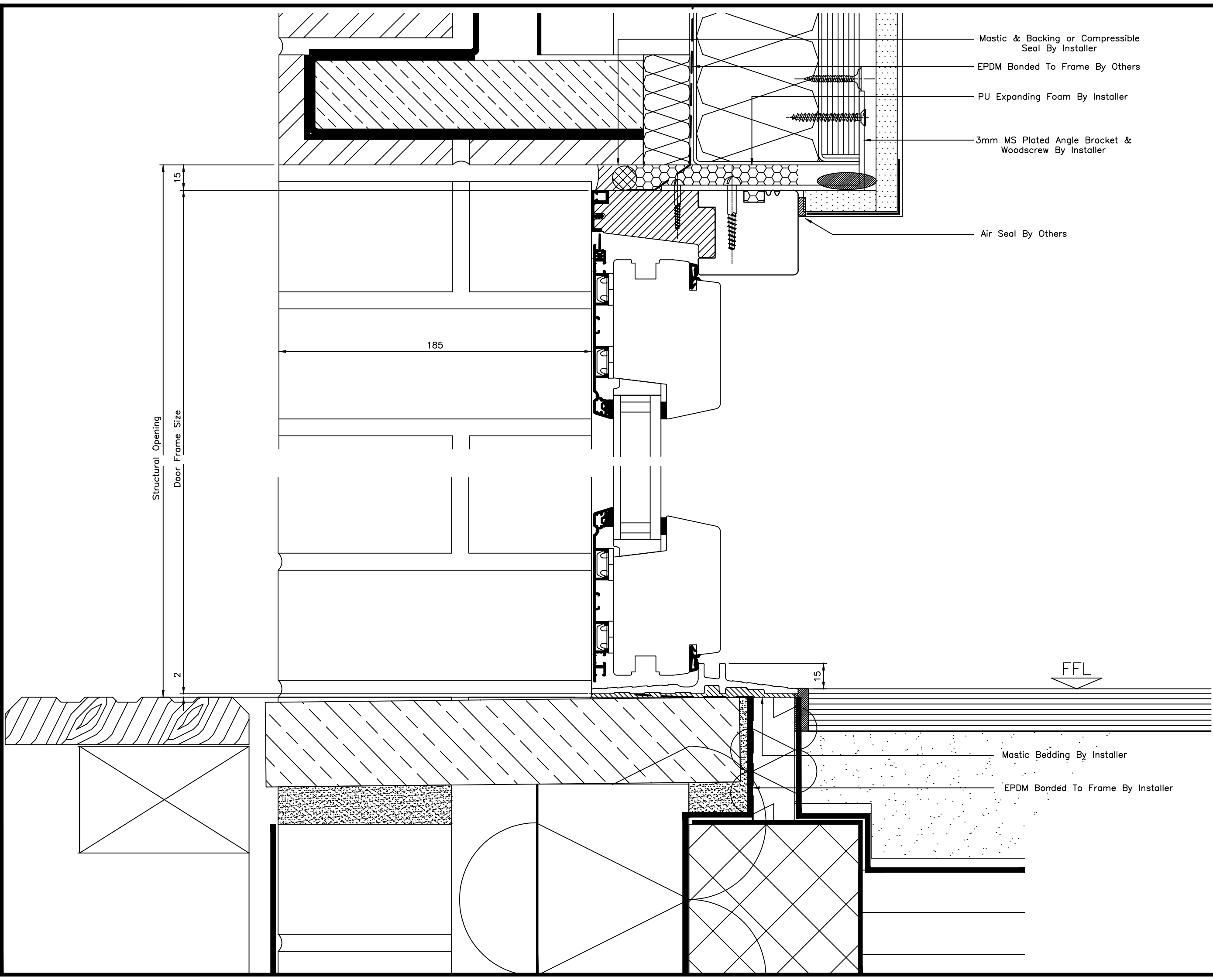
Drawn By RGN Date May 2016

Scale 1:2 @ A3

Contract No. 000000 Drawing No. FIC_OOD1

INFORMATION ISSUE

REVISIONS * | | | | | | | | | |



- Mastic & Backing or Compressible Seal By Installer
- EPDM Bonded To Frame By Others
- PU Expanding Foam By Installer
- 3mm MS Plated Angle Bracket & Woodscrew By Installer
- Air Seal By Others

- Mastic Bedding By Installer
- EPDM Bonded To Frame By Installer

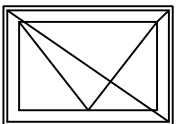
DETAILS ON THIS DRAWING ARE THE
COPYRIGHT OF IDEAL COMBI AND MUST
NOT BE REPRODUCED IN WHOLE OR PART
WITHOUT PERMISSION

DO NOT SCALE !!
GENERAL SPECIFICATION

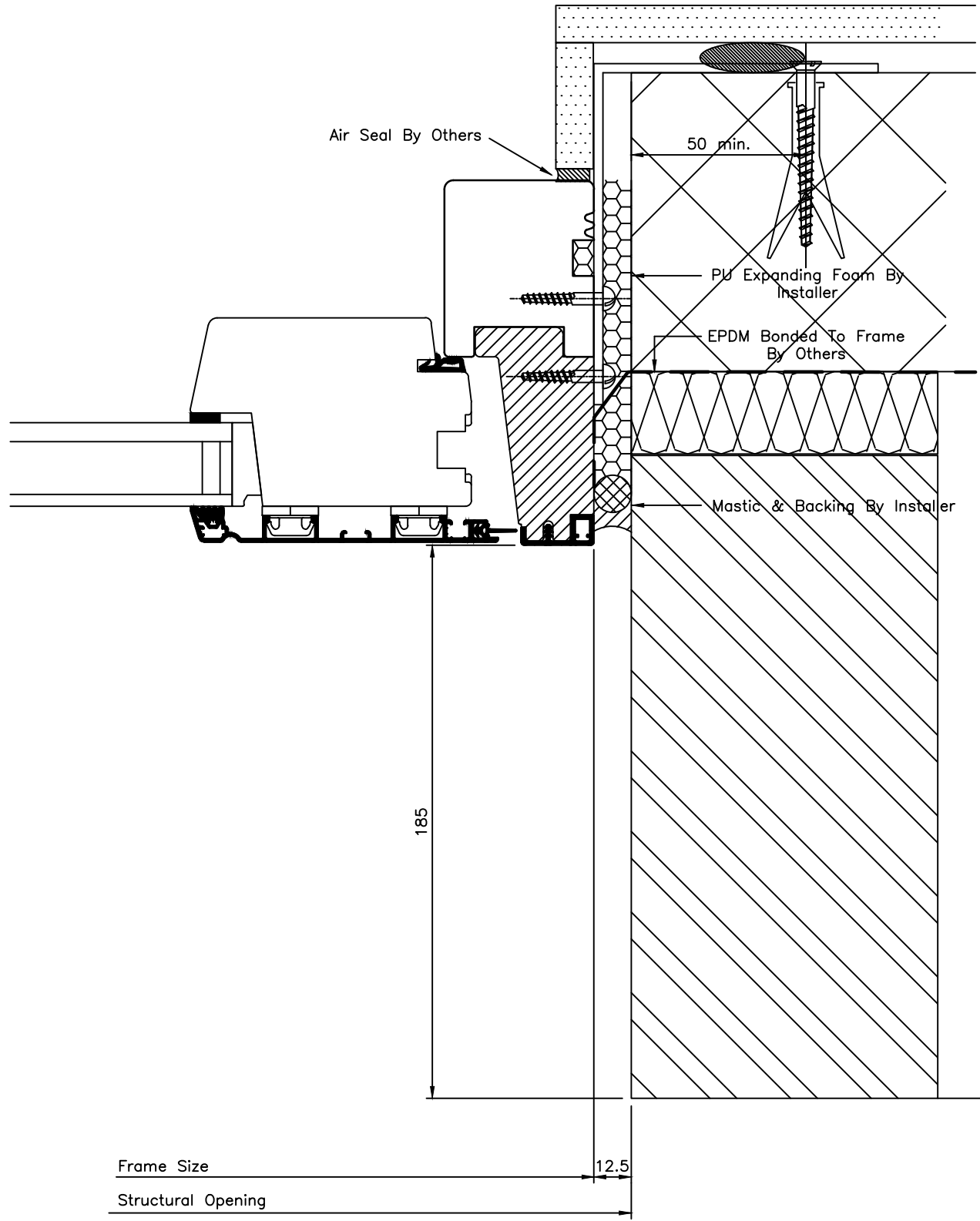
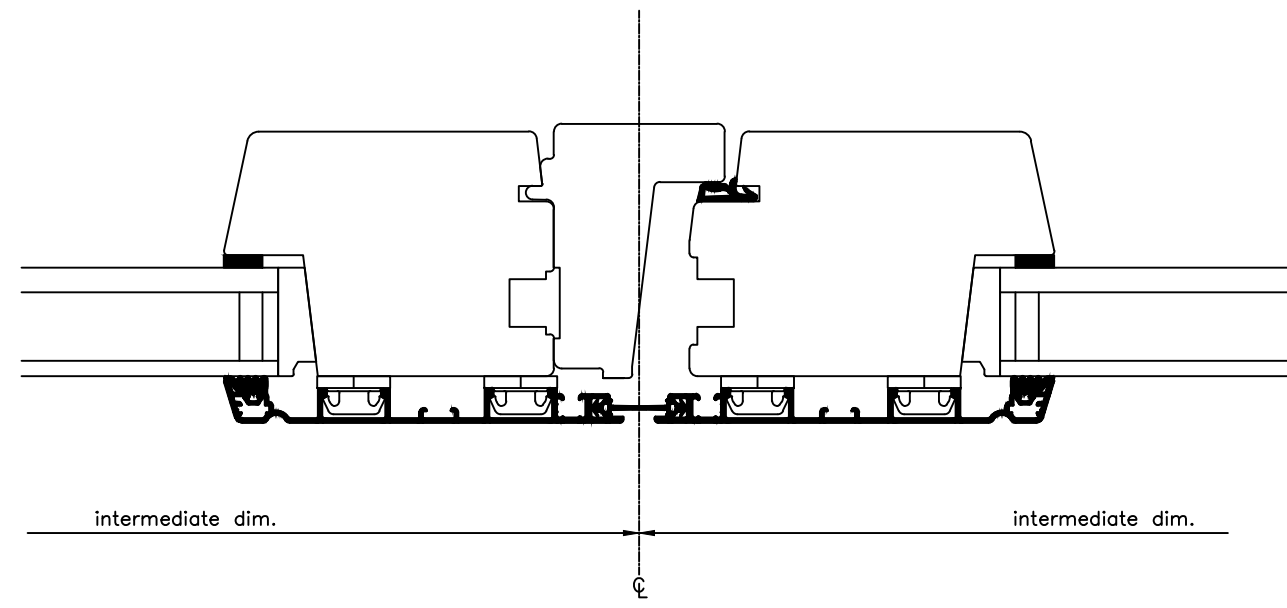
Window type

Finish
Aluminium Frames:-
PPC RAL 7048 30% Gloss (+/- 5%).
Timber - RAL 9010 White. Internal
Aluminium To Futura+ Sashes: RAL
9010 White.

Ironmongery:
Matt Chrome Locking Handles and
Lockable Restrictors To All Outward
Opening Sashes. Locking Hoppe
Handles To Tilt & Turn Sashes.



Note
Arrow points to handle
and diagonal slash shows
frame size



REV	DESCRIPTION	DATE

Architect

Main Contractor

Project

Title
FRAME IC DOOR

Drawn By RGN Date May 2016

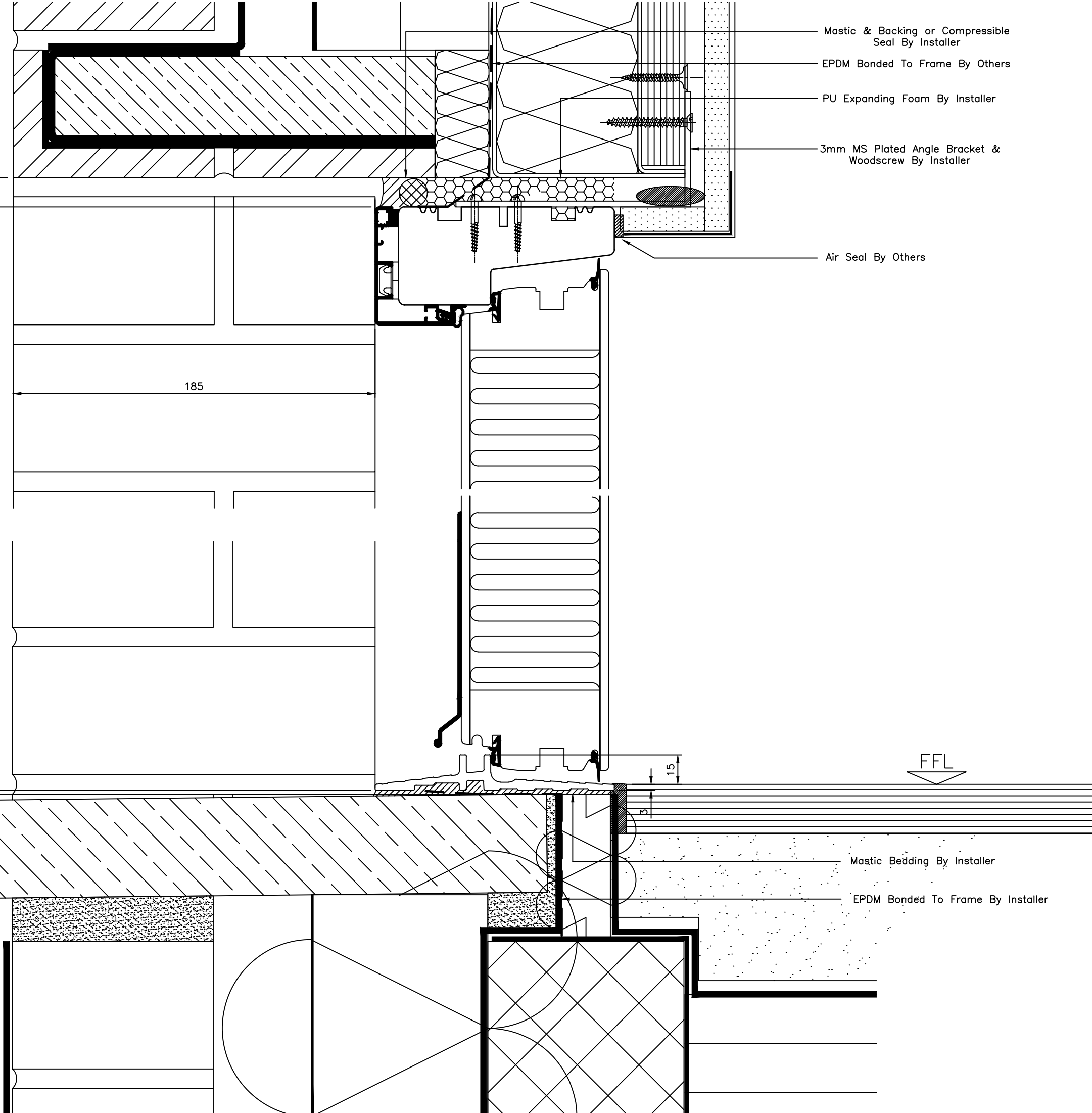
Scale 1:2 @ A3

Contract No. 000000 Drawing No. FIC_OOD2

INFORMATION ISSUE

REVISIONS * | | | | | | | | | |

Structural Opening
Door Frame Size
15
2



- Mastic & Backing or Compressible Seal By Installer
- EPDM Bonded To Frame By Others
- PU Expanding Foam By Installer
- 3mm MS Plated Angle Bracket & Woodscrew By Installer
- Air Seal By Others

idealcombi
www.IdealCombi.com

Chancery Pavilion
Boycott Avenue
Oldbrook
MILTON KEYNES MK6 2TA tel(01582) 860 940 fax(01582) 860 949

DETAILS ON THIS DRAWING ARE THE COPYRIGHT OF IDEAL COMBI AND MUST NOT BE REPRODUCED IN WHOLE OR PART WITHOUT PERMISSION

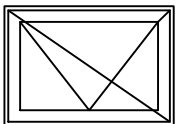
DO NOT SCALE !!

GENERAL SPECIFICATION

Window type

Finish
Aluminium Frames:-
PPC RAL 7048 30% Gloss (+/- 5%).
Timber - RAL 9010 White. Internal Aluminium To Futura+ Sashes: RAL 9010 White.

Ironmongery:
Matt Chrome Locking Handles and Lockable Restrictors To All Outward Opening Sashes. Locking Hoppe Handles To Tilt & Turn Sashes.



Note
Arrow points to handle and diagonal slash shows frame size

REV	DESCRIPTION	DATE

Architect

Main Contractor

Project

Title **FRAME IC - INWARD OPENING DOOR**

Drawn By RGN Date Sept 2016

Scale 1:2 @ A3

Contract No. 000000 Drawing No. **FIC_IOD1**

INFORMATION ISSUE

REVISIONS * | | | | | | | | | |

DETAILS ON THIS DRAWING ARE THE
COPYRIGHT OF IDEAL COMBI AND MUST
NOT BE REPRODUCED IN WHOLE OR PART
WITHOUT PERMISSION

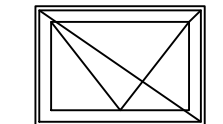
DO NOT SCALE !!

GENERAL SPECIFICATION

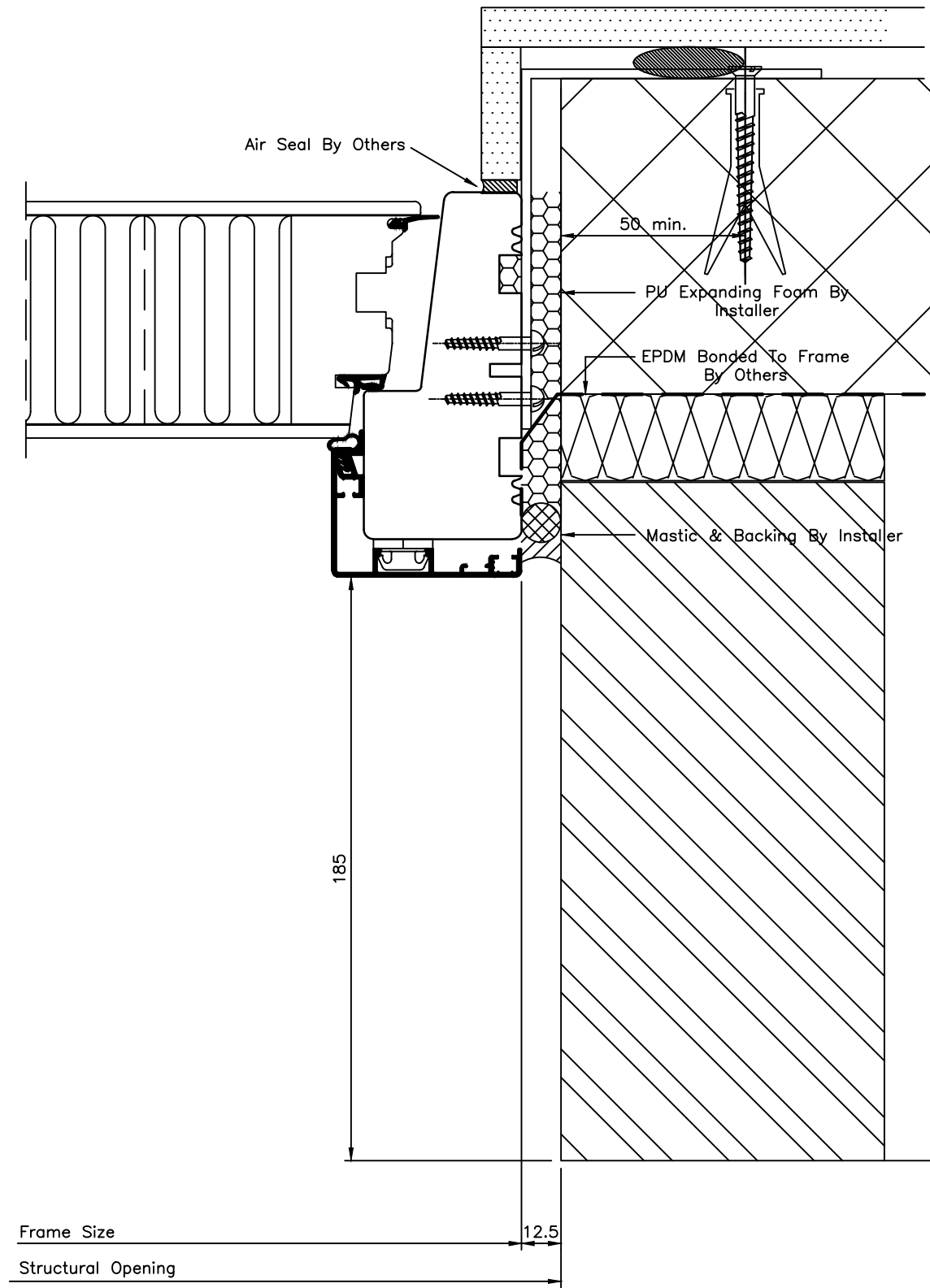
Window type

Finish
Aluminium Frames:-
PPC RAL 7048 30% Gloss (+/- 5%).
Timber - RAL 9010 White. Internal
Aluminium To Futura+ Sashes: RAL
9010 White.

Ironmongery:
Matt Chrome Locking Handles and
Lockable Restrictors To All Outward
Opening Sashes. Locking Hoppe
Handles To Tilt & Turn Sashes.



Note
Arrow points to handle
and diagonal slash shows
frame size



REV	DESCRIPTION	DATE
-----	-------------	------

Architect

Main Contractor

Project

Title FRAME IC - INWARD
OPENING DOOR

Drawn By RGN Date Sept 2016

Scale 1:2 @ A3

Contract No. 000000 Drawing No. **FIC_IOD2**

INFORMATION ISSUE

REVISIONS	*						
-----------	---	--	--	--	--	--	--